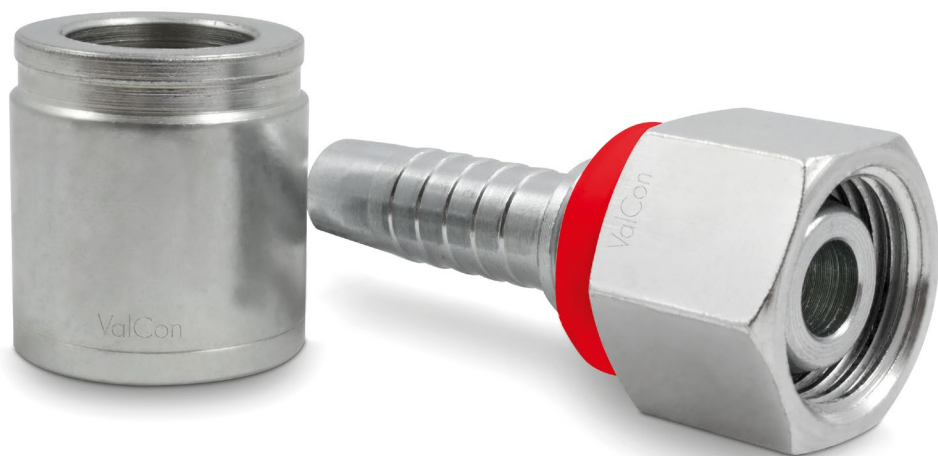


HYDRAULIC HOSE FITTINGS

Suitable for:

ValCon® V8-hose

VC-FITTINGS



powerful · precise · guaranteed


ValCon®
QUALITY HYDRAULICS

HYDRAULIC HOSE FITTINGS

SUITABLE FOR:
VALCON® V8-HOSE

VC-FITTINGS



Advantages

- Reduction of risk of improper application by applying a final production test using the related ValCon® test gauges.
- Avoidance of leaking hydraulic hose assemblies due to the use of individual ferrules suited to EN/SAE standard hoses.
- Easy to assemble using the corresponding ValCon® crimp chart.
- High reliability and durability thanks to the use of materials and components of the highest quality.
- Absolute safety due to guaranteed fourfold safety factor (ratio of bursting pressure to operating pressure) of the components.
- High corrosion resistance due to high-quality galvanized surface (chrome 6 free).

Main fields of application



ValCon®

QUALITY HYDRAULICS



Article No.:
VC-TG-CASE

powerful · precise · guaranteed

Crimp chart for ValCon® hose fittings

ValCon®
QUALITY HYDRAULICS

This crimp chart does not replace the basic literature from the factory to perform the best and best test results required according to DIN or other standards.
The ValCon® crimping pins are provided without load on their assembly and they to be regarded as a mere recommendation. Due to the diverse manufacturing tolerances of hoses and fittings, we recommend checking the best crimping.

Example:
Crimping diameter: 10mm

Hose diameter	Hose thickness	Fitting diameter	Pin diameter
10	3	10	10
10	3	12	12
10	3	14	14
10	3	16	16
10	3	18	18
10	3	20	20
10	3	22	22
10	3	24	24
10	3	26	26
10	3	28	28
10	3	30	30
10	3	32	32
10	3	34	34
10	3	36	36
10	3	38	38
10	3	40	40
10	3	42	42
10	3	44	44
10	3	46	46
10	3	48	48
10	3	50	50
10	3	52	52
10	3	54	54
10	3	56	56
10	3	58	58
10	3	60	60
10	3	62	62
10	3	64	64
10	3	66	66
10	3	68	68
10	3	70	70
10	3	72	72
10	3	74	74
10	3	76	76
10	3	78	78
10	3	80	80
10	3	82	82
10	3	84	84
10	3	86	86
10	3	88	88
10	3	90	90
10	3	92	92
10	3	94	94
10	3	96	96
10	3	98	98
10	3	100	100

Individual diameters and geometries of hoses are reserved.

© 2018 ValCon® Hydraulics GmbH | www.valcon-hydraulics.com

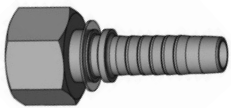


Tip! By using the ValCon® crimp chart and the ValCon® test gauges a safe and durable connection of hoses and fittings is guaranteed.

www.valcon-hydraulics.com

CONTENT

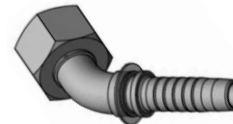
VC1  Ferrule VC1 Hose: V8-2SN	No-Skive Page 6	VC2  Ferrule VC2 Hose: V8-1SN, V8-2SC	No-Skive Page 6	VC4  Ferrule VC4 Hose: V8-4SP	Skive Page 9
AGR BM  BSP parallel male 60° flare	Page 7	AGR conical BMT  BSP tapered male 60° flare NPT-BSP	Page 7	AGN NM  NPTF male 60° flare	Page 8
DKR BF  BSP female 60° flare	Page 8	DKR 90° BF 90°  BSP female 60° flare 90° elbow	Page 9	DKR 90° compact BF 90° compact  BSP compact female 60° flare 90° elbow	Page 9
DKR 45° BF 45°  BSP female 60° flare 45° elbow	Page 10	RGN BKG  BSP banjo	Page 10	Bolt, imperial BMG  BSP bolt	Page 10
AGJ JM  JIC male 74° flare	Page 11	DKJ JF  JIC female 74° flare	Page 11	DKJ 90° JF 90°  JIC female 74° flare 90° elbow	Page 12
DKJ 45° JF 45°  JIC female 74° flare 45° elbow	Page 12	CEL ME  Metric male 24° flare light CEL	Page 13	DKOL MSOF  Metric female 24° flare light DKOL	Page 13
DKOL 90° MSOF 90°  Metric female 24° flare light 90° elbow DKOL	Page 14	DKOL 45° MSOF 45°  Metric female 24° flare light 45° elbow DKOL	Page 14	CES ME  Metric male 24° flare heavy CES	Page 15

DKOS MSOFMetric female 24° flare heavy
DKOS

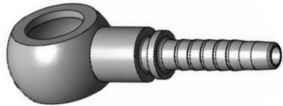
Page 15

DKOS 90° MSOF 90°Metric female 24° flare heavy
90° elbow DKOS

Page 16

DKOS 45° MSOF 45°Metric female 24° flare heavy
45° elbow DKOS

Page 16

RGN MRN

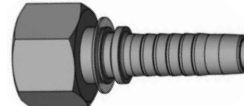
Metric banjo

Page 17

Bolt, metric

Metric bolt

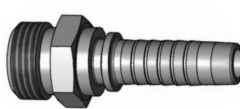
Page 17

DKL MSFMetric female 24°/60° flare
Light multiseal

Page 18

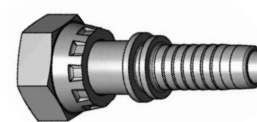
DKL 90° MSF 90°Metric female 24°/60° flare
90° elbow light multiseal

Page 18

ORFS male ORM

ORFS male

Page 19

ORFS female LORF

ORFS female

Page 19

ORFS 90° female LORF 90°ORFS female
90° elbow

Page 20

ORFS 45° female LORF 45°ORFS female
45° elbow

Page 20

SFL 3000 PSI SFH

Flange SAE 3000

Page 21

SFL 3000 PSI 90° SFH 90°Flange SAE 3000
90° elbow

Page 21

SFL 3000 PSI 45° SFH 45°Flange SAE 3000
45° elbow

Page 21

SFL 6000 PSI SFH 6

Flange SAE 6000

Page 22

SFL 6000 PSI 90° SFH 6-90°Flange SAE 6000
90° elbow

Page 22

SFL 6000 PSI 45° SFH 6-45°Flange SAE 6000
45° elbow

Page 22

Cut Split Flange 3000 PSI

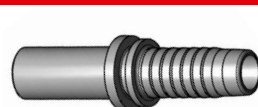
Cut Split Flange 3000 PSI

Page 23

Cut Split Flange 6000 PSI

Cut Split Flange 6000 PSI

Page 23

BEL / BES MOSEMetric standpipe straight
MOSE

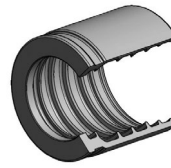
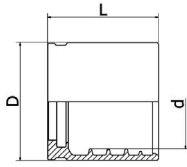
Page 23

Availability of products

In bold print: On stock
Others: On request

VC1

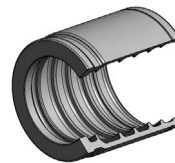
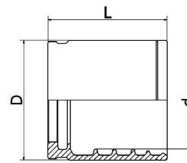
Ferrule VC1
Hose: V8-2SN
No-Skive



Article Number	Hose ID			D		L		d	
	Inch	mm	Size	Inch	mm	Inch	mm	Inch	mm
VC1-04	1/4"	6,4	04	0,87	22,0	1,10	28,0	0,62	15,8
VC1-05	5/16"	8,0	05	0,95	24,0	1,10	28,0	0,69	17,5
VC1-06	3/8"	9,5	06	1,02	26,0	1,10	28,0	0,79	20,0
VC1-08	1/2"	12,7	08	1,18	30,0	1,22	31,0	0,92	23,3
VC1-10	5/8"	16,0	10	1,30	33,0	1,22	31,0	1,04	26,5
VC1-12	3/4"	19,0	12	1,46	37,0	1,50	38,0	1,20	30,4
VC1-16	1"	25,4	16	1,81	46,0	1,87	47,5	1,54	39,0

VC2

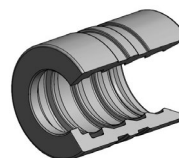
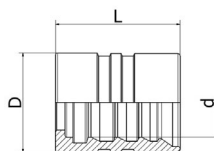
Ferrule VC2
Hose: V8-1SN, V8-2SC
No-Skive



Article Number	Hose ID			D		L		d	
	Inch	mm	Size	Inch	mm	Inch	mm	Inch	mm
VC2-04	1/4"	6,4	04	0,79	20,0	1,02	26,0	0,56	14,3
VC2-05	5/16"	8,0	05	0,87	22,0	1,02	26,0	0,63	16,1
VC2-06	3/8"	9,5	06	0,95	24,0	1,02	26,0	0,72	18,4
VC2-08	1/2"	12,7	08	1,10	28,0	1,10	28,0	0,85	21,7
VC2-10	5/8"	16,0	10	1,26	32,0	1,14	29,0	0,99	25,0
VC2-12	3/4"	19,0	12	1,38	35,0	1,38	35,0	1,13	28,6
VC2-16	1"	25,4	16	1,73	44,0	1,73	44,0	1,45	36,7

VC4

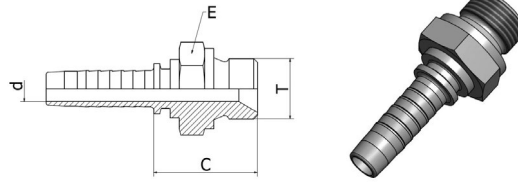
Ferrule VC4
Hose: V8-4SP
Skive



Article Number	Hose ID			D		L		d	
	Inch	mm	Size	Inch	mm	Inch	mm	Inch	mm
VC4-06	3/8"	9,5	06	1,02	26,0	1,28	32,5	0,71	18,1
VC4-08	1/2"	12,7	08	1,18	30,0	1,34	34,0	0,87	22,0
VC4-10	5/8"	16,0	10	1,34	34,0	1,52	38,5	1,02	25,8
VC4-12	3/4"	19,0	12	1,50	38,0	1,69	43,0	1,15	29,3
VC4-16	1"	25,4	16	1,81	46,0	2,21	56,0	1,43	36,2

AGR BM

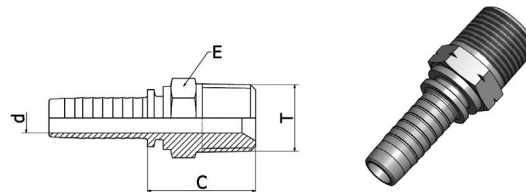
BSP parallel male 60° flare



Article Number	Hose ID		Size	Thread		d		E		Cut-off C		Length	
	Inch	mm		T	Inch	mm	Inch	mm	Inch	mm	Inch	mm	
VCO2BM04	1/4"	6,0	04	1/8-28	0,16	4,0	0,55	14	0,83	21,0	1,81	46,0	
VC04BM04	1/4"	6,0	04	1/4-19	0,16	4,0	0,75	19	1,06	27,0	2,05	52,0	
VCO6BM04	1/4"	6,0	04	3/8-19	0,16	4,0	0,87	22	1,10	28,0	2,09	53,0	
VCO4BM05	5/16"	8,0	05	1/4-19	0,22	5,5	0,75	19	1,06	27,0	2,15	54,5	
VC06BM05	5/16"	8,0	05	3/8-19	0,22	5,5	0,87	22	1,10	28,0	2,19	55,5	
VC06BM06	3/8"	10,0	06	3/8-19	0,28	7,0	0,87	22	1,14	29,0	2,30	58,5	
VCO8BM06	3/8"	10,0	06	1/2-14	0,28	7,0	1,06	27	1,26	32,0	2,42	61,5	
VCO6BM08	1/2"	12,0	08	3/8-19	0,37	9,5	0,87	22	1,14	29,0	2,38	60,5	
VC08BM08	1/2"	12,0	08	1/2-14	0,37	9,5	1,06	27	1,30	33,0	2,54	64,5	
VC12BM08	1/2"	12,0	08	3/4-14	0,37	9,5	1,26	32	1,38	35,0	2,62	66,5	
VCO8BM10	5/8"	16,0	10	1/2-14	0,47	12,0	1,06	27	1,30	33,0	2,66	67,5	
VC10BM10	5/8"	16,0	10	5/8-14	0,47	12,0	1,18	30	1,34	34,0	2,70	68,5	
VC12BM10	5/8"	16,0	10	3/4-14	0,47	12,0	1,26	32	1,38	35,0	2,74	69,5	
VC12BM12	3/4"	19,0	12	3/4-14	0,59	15,0	1,26	32	1,42	36,0	3,37	85,5	
VC16BM12	3/4"	19,0	12	1-11	0,59	15,0	1,62	41	1,54	39,0	3,49	88,5	
VC16BM16	1"	25,0	16	1-11	0,79	20,0	1,62	41	1,58	40,0	3,68	93,5	

AGR conical BMT

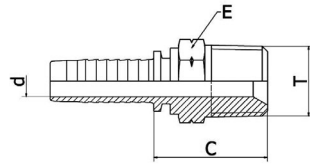
BSP tapered male 60° flare
NPT-BSP



Article Number	Hose ID		Size	Thread		d		E		Cut-off C		Length	
	Inch	mm		T	Inch	mm	Inch	mm	Inch	mm	Inch	mm	
VCO2BMT04	1/4"	6,0	04	1/8-28	0,16	4,0	0,47	12	0,91	23,0	1,89	48,0	
VC04BMT04	1/4"	6,0	04	1/4-19	0,16	4,0	0,59	15	1,10	28,0	2,09	53,0	
VCO6BMT04	1/4"	6,0	04	3/8-19	0,16	4,0	0,75	19	1,10	28,0	2,09	53,0	
VC06BMT05	5/16"	8,0	05	3/8-19	0,22	5,5	0,75	19	1,10	28,0	2,19	55,5	
VC06BMT06	3/8"	10,0	06	3/8-19	0,28	7,0	0,75	19	1,10	28,0	2,27	57,5	
VCO8BMT06	3/8"	10,0	06	1/2-14	0,28	7,0	0,87	22	1,30	33,0	2,46	62,5	
VC08BMT08	1/2"	12,0	08	1/2-14	0,37	9,5	0,87	22	1,34	34,0	2,58	65,5	
VC12BMT10	5/8"	16,0	10	3/4-14	0,47	12,0	1,06	27	1,42	36,0	2,78	70,5	
VC12BMT12	3/4"	19,0	12	3/4-14	0,59	15,0	1,06	27	1,46	37,0	3,41	86,5	
VC16BMT16	1"	25,0	16	1-11	0,79	20,0	1,42	36	1,73	44,0	3,84	97,5	

AGN NM

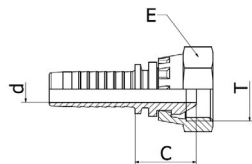
NPTF male 60° flare



Article Number	Hose ID		Size	Thread		d		E		Cut-off C		Length	
	Inch	mm		T	Inch	mm	Inch	mm	Inch	mm	Inch	mm	
VC02NM04	1/4"	6,0	04	1/8-27	0,16	4,0	0,47	12	0,87	22,0	1,85	47,0	
VC04NM04	1/4"	6,0	04	1/4-18	0,16	4,0	0,59	15	1,10	28,0	2,09	53,0	
VC06NM04	1/4"	6,0	04	3/8-18	0,16	4,0	0,75	19	1,10	28,0	2,09	53,0	
VC06NM05	5/16"	8,0	05	3/8-18	0,22	5,5	0,75	19	1,10	28,0	2,19	55,5	
VC04NM06	3/8"	10,0	06	1/4-18	0,28	7,0	0,59	15	1,10	28,0	2,27	57,5	
VC06NM06	3/8"	10,0	06	3/8-18	0,28	7,0	0,75	19	1,10	28,0	2,27	57,5	
VC08NM06	3/8"	10,0	06	1/2-14	0,28	7,0	0,87	22	1,34	34,0	2,50	63,5	
VC06NM08	1/2"	12,0	08	3/8-18	0,37	9,5	0,75	19	1,14	29,0	2,38	60,5	
VC08NM08	1/2"	12,0	08	1/2-14	0,37	9,5	0,87	22	1,38	35,0	2,62	66,5	
VC08NM10	5/8"	16,0	10	1/2-14	0,47	12,0	0,87	22	1,38	35,0	2,74	69,5	
VC12NM10	5/8"	16,0	10	3/4-14	0,47	12,0	1,06	27	1,42	36,0	2,78	70,5	
VC12NM12	3/4"	19,0	12	3/4-14	0,59	15,0	1,06	27	1,46	37,0	3,41	86,5	
VC16NM12	3/4"	19,0	12	1-11.1/2	0,59	15,0	1,42	36	1,69	43,0	3,64	92,5	
VC16NM16	1"	25,0	16	1-11.1/2	0,79	20,0	1,42	36	1,73	44,0	3,84	97,5	

DKR BF

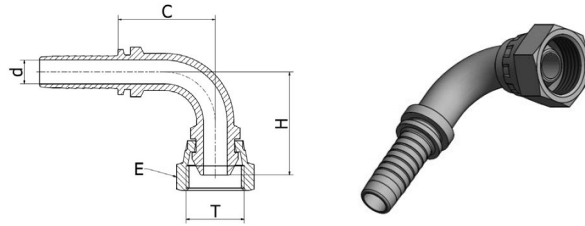
BSP female 60° flare



Article Number	Hose ID		Size	Thread		d		E		Cut-off C		Length	
	Inch	mm		T	Inch	mm	Inch	mm	Inch	mm	Inch	mm	
VC02BF04	1/4"	6,0	04	1/8-28	0,16	4,0	0,55	14	0,63	16,0	1,62	41,0	
VC04BF04	1/4"	6,0	04	1/4-19	0,16	4,0	0,75	19	0,71	18,0	1,69	43,0	
VC06BF04	1/4"	6,0	04	3/8-19	0,16	4,0	0,87	22	0,79	20,0	1,77	45,0	
VC04BF05	5/16"	8,0	05	1/4-19	0,22	5,5	0,75	19	0,71	18,0	1,79	45,5	
VC06BF05	5/16"	8,0	05	3/8-19	0,22	5,5	0,87	22	0,79	20,0	1,87	47,5	
VC04BF06	3/8"	10,0	06	1/4-19	0,28	7,0	0,75	19	0,71	18,0	1,87	47,5	
VC06BF06	3/8"	10,0	06	3/8-19	0,28	7,0	0,87	22	0,79	20,0	1,95	49,5	
VC08BF06	3/8"	10,0	06	1/2-14	0,28	7,0	1,06	27	0,87	22,0	2,03	51,5	
VC06BF08	1/2"	12,0	08	3/8-19	0,35	9,0	0,87	22	0,79	20,0	2,03	51,5	
VC08BF08	1/2"	12,0	08	1/2-14	0,37	9,5	1,06	27	0,91	23,0	2,15	54,5	
VC12BF08	1/2"	12,0	08	3/4-14	0,37	9,5	1,26	32	0,87	22,0	2,11	53,5	
VC08BF10	5/8"	16,0	10	1/2-14	0,47	12,0	1,06	27	0,91	23,0	2,27	57,5	
VC10BF10	5/8"	16,0	10	5/8-14	0,47	12,0	1,18	30	0,87	22,0	2,23	56,5	
VC12BF10	5/8"	16,0	10	3/4-14	0,47	12,0	1,26	32	0,87	22,0	2,23	56,5	
VC12BF12	3/4"	19,0	12	3/4-14	0,59	15,0	1,26	32	0,91	23,0	2,86	72,5	
VC16BF12	3/4"	19,0	12	1-11	0,59	15,0	1,50	38	0,99	25,0	2,94	74,5	
VC16BF16	1"	25,0	16	1-11	0,79	20,0	1,50	38	1,02	26,0	3,13	79,5	

**DKR 90°
BF 90°**

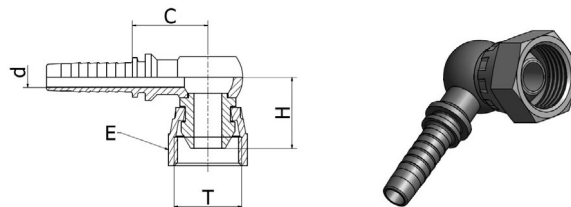
BSP female 60° flare
90° elbow



Article Number	Hose ID		Size	Thread	d		E		Cut-off C		Drop H		Length	
	Inch	mm			Inch	mm	Inch	mm	Inch	mm	Inch	mm	Inch	mm
VC04B90S04	1/4"	6,0	04	1/4-19	0,16	4,0	0,75	19	0,99	25,0	1,10	28,0	1,97	50,0
VC06B90S04	1/4"	6,0	04	3/8-19	0,16	4,0	0,87	22	0,99	25,0	1,22	31,0	1,97	50,0
VC06B90S05	5/16"	8,0	05	3/8-19	0,22	5,5	0,87	22	1,14	29,0	1,42	36,0	2,23	56,5
VC06B90S06	3/8"	10,0	06	3/8-19	0,28	7,0	0,87	22	1,30	33,0	1,38	35,0	2,46	62,5
VC08B90S06	3/8"	10,0	06	1/2-14	0,28	7,0	1,06	27	1,30	33,0	1,46	37,0	2,46	62,5
VC06B90S08	1/2"	12,0	08	3/8-19	0,37	9,5	0,87	22	1,54	39,0	1,62	41,0	2,78	70,5
VC08B90S08	1/2"	12,0	08	1/2-14	0,37	9,5	1,06	27	1,54	39,0	1,62	41,0	2,78	70,5
VC10B90S08	1/2"	12,0	08	5/8-14	0,37	9,5	1,18	30	1,54	39,0	1,73	44,0	2,78	70,5
VC12B90S08	1/2"	12,0	08	3/4-14	0,37	9,5	1,26	32	1,54	39,0	1,73	44,0	2,78	70,5
VC10B90S10	5/8"	16,0	10	5/8-14	0,47	12,0	1,18	30	1,77	45,0	1,93	49,0	3,13	79,5
VC12B90S10	5/8"	16,0	10	3/4-14	0,47	12,0	1,26	32	1,77	45,0	2,01	51,0	3,13	79,5
VC12B90S12	3/4"	19,0	12	3/4-14	0,59	15,0	1,26	32	2,21	56,0	2,13	54,0	4,16	105,5
VC16B90S12	3/4"	19,0	12	1-11	0,59	15,0	1,50	38	2,21	56,0	2,29	58,0	4,16	105,5
VC16B90S16	1"	25,0	16	1-11	0,79	20,0	1,50	38	2,76	70,0	2,56	65,0	4,87	123,5

**DKR 90° compact
BF 90° compact**

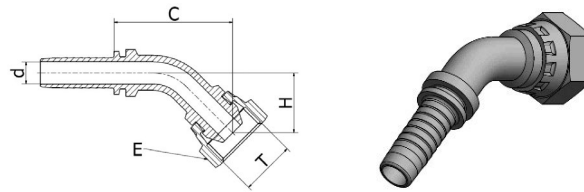
BSP compact female 60° flare
90° elbow



Article Number	Hose ID		Size	Thread	d		E		Cut-off C		Drop H		Length	
	Inch	mm			Inch	mm	Inch	mm	Inch	mm	Inch	mm	Inch	mm
VC04B90K04	1/4"	6,0	04	1/4-19	0,16	4,0	0,75	19	0,99	25,0	0,83	21,0	1,97	50,0
VC06B90K06	3/8"	10,0	06	3/8-19	0,28	7,0	0,87	22	1,02	26,0	0,87	22,0	2,19	55,5
VC08B90K08	1/2"	12,0	08	1/2-14	0,37	9,5	1,06	27	1,06	27,0	1,06	27,0	2,30	58,5
VC12B90K12	3/4"	19,0	12	3/4-14	0,59	15,0	1,26	32	1,22	31,0	1,14	29,0	3,17	80,5

DKR 45° BF 45°

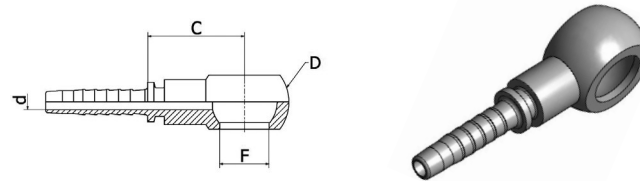
BSP female 60° flare
45° elbow



Article Number	Hose ID		Size	Thread		d		E		Cut-off C		Drop H		Length	
	Inch	mm		Inch	mm	Inch	mm	Inch	mm	Inch	mm	Inch	mm	Inch	mm
VC04B45S04	1/4"	6,0	04	1/4-19	0,16	4,0	0,75	19	1,38	35,0	0,63	16,0	2,36	60,0	
VC06B45S04	1/4"	6,0	04	3/8-19	0,16	4,0	0,87	22	1,69	43,0	0,79	20,0	2,68	68,0	
VC06B45S05	5/16"	8,0	05	3/8-19	0,22	5,5	0,87	22	1,50	38,0	0,83	21,0	2,58	65,5	
VC06B45S06	3/8"	10,0	06	3/8-19	0,28	7,0	0,87	22	1,73	44,0	0,75	19,0	2,90	73,5	
VC08B45S06	3/8"	10,0	06	1/2-14	0,28	7,0	1,06	27	1,62	41,0	0,87	22,0	2,78	70,5	
VC08B45S08	1/2"	12,0	08	1/2-14	0,37	9,5	1,06	27	1,97	50,0	0,91	23,0	3,21	81,5	
VC10B45S10	5/8"	16,0	10	5/8-14	0,47	12,0	1,18	30	2,32	59,0	1,06	27,0	3,68	93,5	
VC12B45S10	5/8"	16,0	10	3/4-14	0,47	12,0	1,26	32	2,36	60,0	0,99	25,0	3,72	94,5	
VC12B45S12	3/4"	19,0	12	3/4-14	0,59	15,0	1,26	32	2,76	70,0	1,10	28,0	4,71	119,5	
VC16B45S12	3/4"	19,0	12	1-11	0,59	15,0	1,50	38	2,96	75,0	1,18	30,0	4,91	124,5	
VC16B45S16	1"	25,0	16	1-11	0,79	20,0	1,50	38	3,31	84,0	1,38	35,0	5,42	137,5	

RGN BKG

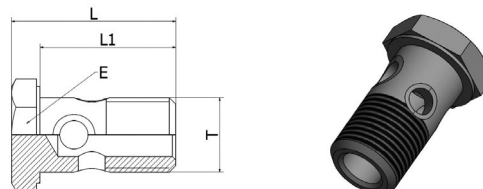
BSP banjo



Article Number	Hose ID		Size	F		D		d		Cut-off C		Length		
	Inch	mm		Inch	mm	Inch	mm	Inch	mm	Inch	mm	Inch	mm	
VC04BKG04	1/4"	6,0	04	0,52	13,3	1/4"	0,95	24,0	0,16	4,0	1,02	26,0	2,01	51,0
VC06BKG06	3/8"	10,0	06	0,66	16,8	3/8"	1,10	28,0	0,28	7,0	1,02	26,0	2,19	55,5
VC08BKG06	3/8"	10,0	06	0,83	21,1	1/2"	1,42	36,0	0,28	7,0	1,22	31,0	2,38	60,5
VC08BKG08	1/2"	12,0	08	0,83	21,1	1/2"	1,42	36,0	0,39	10,0	1,22	31,0	2,46	62,5
VC10BKG10	5/8"	16,0	10	0,91	23,1	5/8"	1,58	40,0	0,47	12,0	1,50	38,0	2,86	72,5
VC12BKG12	3/4"	19,0	12	1,05	26,6	3/4"	1,77	45,0	0,59	15,0	1,50	38,0	3,45	87,5
VC16BKG16	1"	25,0	16	1,32	33,5	1"	2,29	58,0	0,79	20,0	2,01	51,0	4,12	104,5

Bolt, imperial BMG

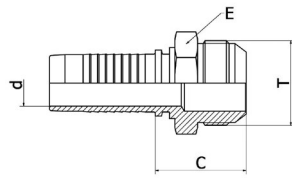
BSP bolt



Article Number	T	L		L1		E		Press. Max	
		Inch	mm	Inch	mm	Inch	mm	psi	bar
VC-RX02BMG	1/8-28	0,95	24,0	0,77	19,5	0,55	14,0	4351	300
VC-RX04BMG	1/4-19	1,36	34,5	1,12	28,5	0,75	19,0	4351	300
VC-RX06BMG	3/8-19	1,60	40,5	1,30	33,0	0,87	22,0	4351	300
VC-RX08BMG	1/2-14	1,81	46,0	1,50	38,0	1,06	27,0	3626	250
VC-RX10BMG	5/8-14	1,97	50,0	1,65	42,0	1,18	30,0	2901	200
VC-RX12BMG	3/4-14	2,21	56,0	1,85	47,0	1,26	32,0	2901	200
VC-RX16BMG	1-11	2,72	69,0	2,29	58,0	1,62	41,0	2175	150

AGJ
JM

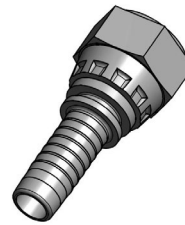
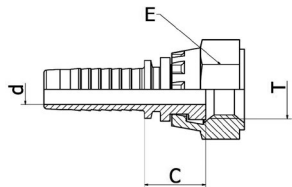
JIC male 74° flare



Article Number	Hose ID		Size	Thread		d		E		Cut-off C		Length	
	Inch	mm		T	Inch	mm	Inch	mm	Inch	mm	Inch	mm	
VC07JM04	1/4"	6,0	04	7/16-20	0,16	4,0	0,47	12	1,06	27,0	2,05	52,0	
VC08JM04	1/4"	6,0	04	1/2-20	0,16	4,0	0,55	14	1,06	27,0	2,05	52,0	
VC09JM04	1/4"	6,0	04	9/16-18	0,16	4,0	0,59	15	1,06	27,0	2,05	52,0	
VC09JM05	5/16"	8,0	05	9/16-18	0,22	5,5	0,59	15	1,06	27,0	2,15	54,5	
VC09-JM06	3/8"	10,0	06	9/16-18	0,28	7,0	0,59	15	1,06	27,0	2,23	56,5	
VC12JM06	3/8"	10,0	06	3/4-16	0,28	7,0	0,75	19	1,18	30,0	2,34	59,5	
VC14JM06	3/8"	10,0	06	7/8-14	0,28	7,0	0,95	24	1,34	34,0	2,50	63,5	
VC12JM08	1/2"	12,0	08	3/4-16	0,37	9,5	0,75	19	1,22	31,0	2,46	62,5	
VC14JM08	1/2"	12,0	08	7/8-14	0,37	9,5	0,95	24	1,38	35,0	2,62	66,5	
VC17JM08	1/2"	12,0	08	1.1/16-12	0,37	9,5	1,06	27	1,46	37,0	2,70	68,5	
VC14JM10	5/8"	16,0	10	7/8-14	0,47	12,0	0,95	24	1,38	35,0	2,74	69,5	
VC17JM10	5/8"	16,0	10	1.1/16-12	0,47	12,0	1,06	27	1,46	37,0	2,82	71,5	
VC17JM12	3/4"	19,0	12	1.1/16-12	0,59	15,0	1,06	27	1,50	38,0	3,45	87,5	
VC19JM12	3/4"	19,0	12	1.3/16-12	0,59	15,0	1,26	32	1,62	41,0	3,57	90,5	
VC21JM12	3/4"	19,0	12	1.5/16-12	0,59	15,0	1,34	34	1,65	42,0	3,61	91,5	
VC21JM16	1"	25,0	16	1.5/16-12	0,79	20,0	1,34	34	1,69	43,0	3,80	96,5	
VC26JM16	1"	25,0	16	1.5/8-12	0,79	20,0	1,65	42	1,81	46,0	3,92	99,5	

DKJ
JF

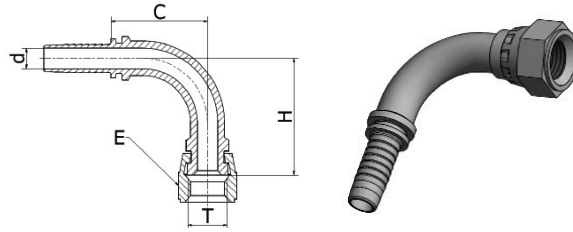
JIC female 74° flare



Article Number	Hose ID		Size	Thread		d		E		Cut-off C		Length	
	Inch	mm		T	Inch	mm	Inch	mm	Inch	mm	Inch	mm	
VC07JF04	1/4"	6,0	04	7/16-20	0,16	4,0	0,59	15	0,51	13,0	1,50	38,0	
VC08JF04	1/4"	6,0	04	1/2-20	0,16	4,0	0,67	17	0,59	15,0	1,58	40,0	
VC09JF04	1/4"	6,0	04	9/16-18	0,16	4,0	0,75	19	0,63	16,0	1,62	41,0	
VC08JF05	5/16"	8,0	05	1/2-20	0,22	5,5	0,67	17	0,59	15,0	1,67	42,5	
VC09JF05	5/16"	8,0	05	9/16-18	0,22	5,5	0,75	19	0,63	16,0	1,71	43,5	
VC09JF06	3/8"	10,0	06	9/16-18	0,28	7,0	0,75	19	0,63	16,0	1,79	45,5	
VC12JF06	3/8"	10,0	06	3/4-16	0,28	7,0	0,95	24	0,63	16,0	1,79	45,5	
VC12JF08	1/2"	12,0	08	3/4-16	0,37	9,5	0,95	24	0,67	17,0	1,91	48,5	
VC14JF08	1/2"	12,0	08	7/8-14	0,37	9,5	1,06	27	0,75	19,0	1,99	50,5	
VC17JF08	1/2"	12,0	08	1.1/16-12	0,37	9,5	1,26	32	0,75	19,0	1,99	50,5	
VC14JF10	5/8"	16,0	10	7/8-14	0,47	12,0	1,06	27	0,75	19,0	2,11	53,5	
VC17JF10	5/8"	16,0	10	1.1/16-12	0,47	12,0	1,26	32	0,75	19,0	2,11	53,5	
VC17JF12	3/4"	19,0	12	1.1/16-12	0,59	15,0	1,26	32	0,79	20,0	2,74	69,5	
VC19JF12	3/4"	19,0	12	1.3/16-12	0,59	15,0	1,42	36	0,83	21,0	2,78	70,5	
XV21JF12	3/4"	19,0	12	1.5/16-12	0,59	15,0	1,50	38	0,83	21,0	2,78	70,5	
VC21JF16	1"	25,0	16	1.5/16-12	0,79	20,0	1,50	38	0,87	22,0	2,97	75,5	

DKJ 90°
JF 90°

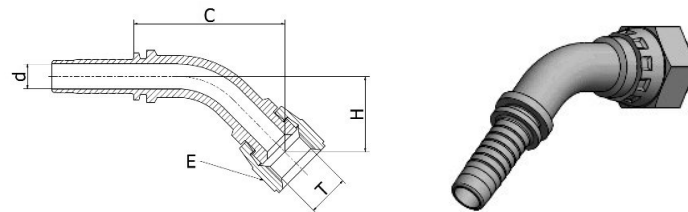
JIC female 74° flare
90° elbow



Article Number	Hose ID		Size	Thread		d		E		Cut-off C		Drop H		Length	
	Inch	mm		T	Inch	mm	Inch	mm	Inch	mm	Inch	mm	Inch	mm	
VC07J90S04	1/4"	6,0	04	7/16-20	0,16	4,0	0,59	15	0,99	25,0	0,95	24,0	1,97	50,0	
VC08J90S04	1/4"	6,0	04	1/2-20	0,16	4,0	0,67	17	0,99	25,0	0,99	25,0	1,97	50,0	
VC09J90S04	1/4"	6,0	04	9/16-18	0,16	4,0	0,75	19	1,06	27,0	1,02	26,0	2,05	52,0	
VC09J90S05	5/16"	8,0	05	9/16-18	0,22	5,5	0,75	19	1,18	30,0	1,22	31,0	2,27	57,5	
VC09J90S06	3/8"	10,0	06	9/16-18	0,28	7,0	0,75	19	1,30	33,0	1,26	32,0	2,46	62,5	
VC12J90S06	3/8"	10,0	06	3/4-16	0,28	7,0	0,95	24	1,30	33,0	1,30	33,0	2,46	62,5	
VC14J90S08	1/2"	12,0	08	7/8-14	0,37	9,5	0,95	24	1,54	39,0	1,50	38,0	2,78	70,5	
VC12J90S08	1/2"	12,0	08	3/4-16	0,37	9,5	1,06	27	1,65	42,0	1,65	42,0	2,90	73,5	
VC14J90S08	1/2"	12,0	08	7/8-14	0,37	9,5	1,26	32	1,54	39,0	1,65	42,0	2,78	70,5	
VC17J90S10	5/8"	16,0	10	1.1/16-12	0,47	12,0	1,06	27	1,77	45,0	1,77	45,0	3,13	79,5	
VC14J90S10	5/8"	16,0	10	7/8-14	0,47	12,0	1,26	32	1,77	45,0	1,77	45,0	3,13	79,5	
VC17J90S12	3/4"	19,0	12	1.1/16-12	0,59	15,0	1,26	32	2,21	56,0	2,05	52,0	4,16	105,5	
VC14J90S12	3/4"	19,0	12	7/8-14	0,59	15,0	1,42	36	2,21	56,0	2,09	53,0	4,16	105,5	
VC14J90S16	1"	25,0	16	7/8-14	0,79	20,0	1,50	38	2,76	70,0	2,56	65,0	4,87	123,5	

DKJ 45°
JF 45°

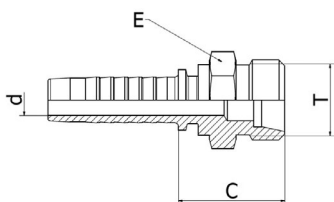
JIC female 74° flare
45° elbow



Article Number	Hose ID		Size	Thread		d		E		Cut-off C		Drop H		Length	
	Inch	mm		T	Inch	mm	Inch	mm	Inch	mm	Inch	mm	Inch	mm	
VC07J45S04	1/4"	6,0	04	7/16-20	0,16	4,0	0,59	15	1,34	34,0	0,51	13,0	2,32	59,0	
VC08J45S04	1/4"	6,0	04	1/2-20	0,16	4,0	0,67	17	1,26	32,0	0,55	14,0	2,25	57,0	
VC09J45S04	1/4"	6,0	04	9/16-18	0,16	4,0	0,75	19	1,42	36,0	0,59	15,0	2,40	61,0	
VC09J45S05	5/16"	8,0	05	9/16-18	0,22	5,5	0,75	19	1,46	37,0	0,79	20,0	2,54	64,5	
VC09J45S06	3/8"	10,0	06	9/16-18	0,28	7,0	0,75	19	1,54	39,0	0,63	16,0	2,70	68,5	
VC12J45S06	3/8"	10,0	06	3/4-16	0,28	7,0	0,95	24	1,62	41,0	0,75	19,0	2,78	70,5	
VC12J45S08	1/2"	12,0	08	3/4-16	0,37	9,5	0,95	24	1,81	46,0	0,83	21,0	3,05	77,5	
VC14J45S08	1/2"	12,0	08	7/8-14	0,37	9,5	1,06	27	2,05	52,0	0,91	23,0	3,29	83,5	
VC14J45S10	5/8"	16,0	10	7/8-14	0,47	12,0	1,06	27	2,29	58,0	0,91	23,0	3,64	92,5	
VC17J45S10	5/8"	16,0	10	1.1/16-12	0,47	12,0	1,26	32	2,68	68,0	0,91	23,0	4,04	102,5	
VC17J45S12	3/4"	19,0	12	1.1/16-12	0,59	15,0	1,26	32	2,72	69,0	1,06	27,0	4,67	118,5	
VC19J45S12	3/4"	19,0	12	1.3/16-12	0,59	15,0	1,42	36	2,56	65,0	1,18	30,0	4,51	114,5	
VC21J45S12	3/4"	19,0	12	1.5/16-12	0,59	15,0	1,50	38	2,84	72,0	1,18	30,0	4,79	121,5	
VC21J45S16	1"	25,0	16	1.5/16-12	0,79	20,0	1,50	38	3,27	83,0	1,34	34,0	5,38	136,5	

CEL
ME

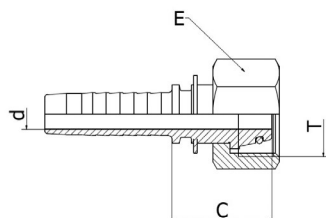
Metric male 24° flare light



	Hose ID		Thread	d		E		Pipe		Cut-off C		Length		
Article Number	Inch	mm	Size	T	Inch	mm	Inch	mm	Inch	mm	Inch	mm	Inch	mm
VC12ME06-04	1/4"	6,0	04	M12x1,5	0,16	4,0	0,55	14	0,24	6,0	0,91	23,0	1,89	48,0
VC14ME08-04	1/4"	6,0	04	M14x1,5	0,16	4,0	0,59	15	0,32	8,0	0,87	22,0	1,85	47,0
VC16ME10-04	1/4"	6,0	04	M16x1,5	0,16	4,0	0,67	17	0,39	10,0	0,91	23,0	1,89	48,0
VC18ME12-04	1/4"	6,0	04	M18x1,5	0,16	4,0	0,75	19	0,47	12,0	0,95	24,0	1,93	49,0
VC16ME10-05	5/16"	8,0	05	M16x1,5	0,22	5,5	0,67	17	0,39	10,0	0,91	23,0	1,99	50,5
VC18ME12-05	5/16"	8,0	05	M18x1,5	0,22	5,5	0,75	19	0,47	12,0	0,95	24,0	2,03	51,5
VC16ME10-06	3/8"	10,0	06	M16x1,5	0,28	7,0	0,67	17	0,39	10,0	0,91	23,0	2,07	52,5
VC18ME12-06	3/8"	10,0	06	M18x1,5	0,28	7,0	0,75	19	0,47	12,0	0,95	24,0	2,11	53,5
VC22ME15-06	3/8"	10,0	06	M22x1,5	0,28	7,0	0,87	22	0,59	15,0	0,99	25,0	2,15	54,5
VC18ME12-08	1/2"	12,0	08	M18x1,5	0,37	9,5	0,75	19	0,47	12,0	0,99	25,0	2,22	56,5
VC22ME15-08	1/2"	12,0	08	M22x1,5	0,37	9,5	0,87	22	0,59	15,0	1,02	26,0	2,26	57,5
VC26ME18-08	1/2"	12,0	08	M26x1,5	0,37	9,5	1,06	27	0,71	18,0	1,06	27,00	2,30	58,5
VC26ME18-10	5/8"	16,0	10	M26x1,5	0,47	12,0	1,06	27	0,71	18,0	1,06	27,00	2,42	61,5
VC30ME22-12	3/4"	19,0	12	M30x2,0	0,59	15,0	1,18	30	0,87	22,0	1,30	33,00	3,25	82,5
VC36ME28-16	1"	25,0	16	M36x2,0	0,79	20,0	1,42	36	1,10	28,0	1,26	32,00	3,37	85,5

DKOL
MSOF

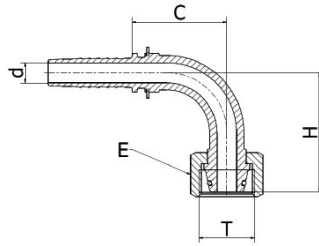
Metric female 24° flare light



	Hose ID		Thread	d		E		Pipe		Cut-off C		Length		
Article Number	Inch	mm	Size	T	Inch	mm	Inch	mm	Inch	mm	Inch	mm	Inch	mm
VC12MSOF06-04	1/4"	6,0	04	M12x1,5	0,16	4,0	0,55	14	0,24	6,0	0,79	20,0	1,77	45,0
VC14MSOF08-04	1/4"	6,0	04	M14x1,5	0,16	4,0	0,67	17	0,32	8,0	0,91	23,0	1,89	48,0
VC16MSOF10-04	1/4"	6,0	04	M16x1,5	0,16	4,0	0,75	19	0,39	10,0	0,91	23,0	1,89	48,0
VC18MSOF12-04	1/4"	6,0	04	M18x1,5	0,16	4,0	0,87	22	0,47	12,0	0,95	24,0	1,93	49,0
VC14MSOF08-05	5/16"	8,0	05	M14x1,5	0,22	5,5	0,67	17	0,32	8	0,89	22,7	1,98	50,2
VC16MSOF10-05	5/16"	8,0	05	M16x1,5	0,22	5,5	0,75	19	0,39	10,0	0,91	23,0	1,99	50,5
VC18MSOF12-05	5/16"	8,0	05	M18x1,5	0,22	5,5	0,87	22	0,47	12,0	0,95	24,1	2,03	51,6
VC16MSOF10-06	3/8"	10,0	06	M16x1,5	0,28	7,0	0,75	19	0,39	10,0	0,99	25,0	2,15	54,5
VC18MSOF12-06	3/8"	10,0	06	M18x1,5	0,28	7,0	0,87	22	0,47	12,0	0,95	24,0	2,11	53,5
VC22MSOF15-06	3/8"	10,0	06	M22x1,5	0,28	7,0	1,06	27	0,59	15,0	1,10	28,0	2,26	57,5
VC22MSOF15-08	1/2"	12,0	08	M22x1,5	0,37	9,5	1,06	27	0,59	15,0	1,10	28,0	2,34	59,5
VC26MSOF18-10	5/8"	16,0	10	M26x1,5	0,47	12,0	1,26	32	0,71	18,0	1,14	29,0	2,50	63,5
VC30MSOF22-12	3/4"	19,0	12	M30x2,0	0,59	15,0	1,42	36	0,87	22,0	1,14	29,0	3,09	78,5
VC36MSOF28-16	1"	25,0	16	M36x2,0	0,79	20,0	1,62	41	1,10	28,0	1,18	30,0	3,29	83,5

DKOL 90° MSOF 90°

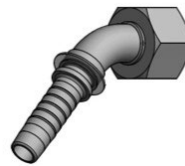
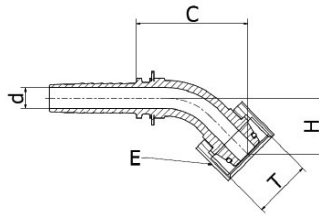
Metric female 24° flare light
90° elbow



Article Number	Hose ID		Thread	d		E		Pipe		Cut-off C		Drop H		Length		
	Inch	mm		Inch	mm	Inch	mm	Inch	mm	Inch	mm	Inch	mm	Inch	mm	
VC14MSOF08-90S04	1/4"	6,0	04	M14x1,5	0,16	4,0	0,67	17	0,32	8,0	1,06	27,0	1,26	32,0	2,05	52,0
VC16MSOF10-90S04	1/4"	6,0	04	M16x1,5	0,16	4,0	0,75	19	0,39	10,0	1,10	28,0	1,06	27,0	2,09	53,0
VC16MSOF10-90S05	5/16"	8,0	05	M16x1,5	0,22	5,5	0,75	19	0,39	10,0	1,34	34,0	1,22	31,0	2,42	61,5
VC16MSOF10-90S06	3/8"	10,0	06	M16x1,5	0,28	7,0	0,75	19	0,39	10,0	1,26	32,0	1,18	30,0	2,42	61,5
VC18MSOF12-90S06	3/8"	10,0	06	M18x1,5	0,28	7,0	0,87	22	0,47	12,0	1,26	32,0	1,58	40,0	2,42	61,5
VC22MSOF15-90S06	3/8"	10,0	06	M22x1,5	0,28	7,0	1,06	27	0,59	15,0	1,30	33,0	1,89	48,0	2,46	62,5
VC22MSOF15-90S08	1/2"	12,0	08	M22x1,5	0,37	9,5	1,06	27	0,59	15,0	1,69	43,0	1,42	36,0	2,93	74,5
VC26MSOF18-90S10	5/8"	16,0	10	M26x1,5	0,47	12,0	1,26	32	0,71	18,0	1,81	46,0	2,09	53,0	3,17	80,5
VC30MSOF22-90S12	3/4"	19,0	12	M30x2,0	0,59	15,0	1,42	36	0,87	22,0	2,25	57,0	1,97	50,0	4,19	106,5
VC36MSOF35-90S16	1"	25,0	16	M36x2,0	0,79	20,0	1,62	41	1,10	28,0	2,84	72,0	2,29	58,0	4,94	125,5

DKOL 45° MSOF 45°

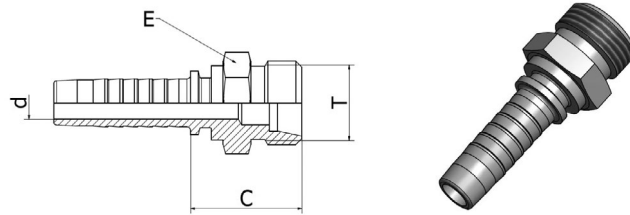
Metric female 24° flare light
45° elbow



Article Number	Hose ID		Thread	d		E		Pipe		Cut-off C		Drop H		Length		
	Inch	mm		Inch	mm	Inch	mm	Inch	mm	Inch	mm	Inch	mm	Inch	mm	
VC14MSOF08-45S04	1/4"	6,0	04	M14x1,5	0,16	4,0	0,67	17	0,32	8,0	1,50	38,0	0,67	17,0	2,48	63,0
VC16MSOF10-45S05	5/16"	8,0	05	M16x1,5	0,22	5,5	0,75	19	0,39	10,0	1,54	39,0	0,79	20,0	2,62	66,5
VC18MSOF12-45S06	3/8"	10,0	06	M18x1,5	0,28	7,0	0,87	22	0,47	12,0	1,73	44,0	0,75	19,0	2,89	73,5
VC22MSOF15-45S08	1/2"	12,0	08	M22x1,5	0,37	9,5	1,06	27	0,59	15,0	1,85	47,0	0,91	23,0	3,09	78,5
VC30MSOF22-45S12	3/4"	19,0	12	M30x2,0	0,59	15,0	1,42	36	0,87	22,0	3,31	84,0	1,18	30,0	5,26	133,5
VC36MSOF28-45S16	1"	25,0	16	M36x2,0	0,79	20,0	1,62	41	1,10	28,0	3,15	80,0	1,38	35,0	5,26	133,5

CES
ME

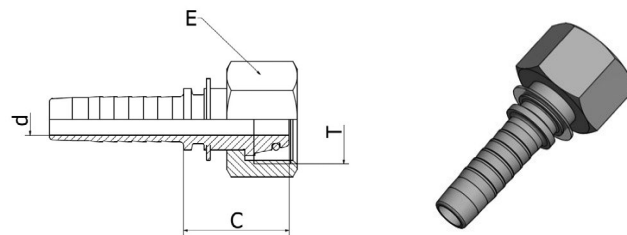
Metric male 24° flare heavy



Article Number	Hose ID		Size	Thread	d		E		Pipe		Cut-off C		Length	
	Inch	mm			Inch	mm	Inch	mm	Inch	mm	Inch	mm	Inch	mm
VC16ME08-04	1/4"	6,0	04	M16x1,5	0,16	4,0	0,67	17	0,32	8,0	1,06	27,0	2,05	52,0
VC18ME10-04	1/4"	6,0	04	M18x1,5	0,16	4,0	0,75	19	0,39	10,0	1,06	27,0	2,05	52,0
VC20ME12-05	5/16"	8,0	05	M20x1,5	0,22	5,5	0,87	22	0,47	12,0	1,14	29,0	2,22	56,5
VC20ME12-06	3/8"	10,0	06	M20x1,5	0,28	7,0	0,87	22	0,47	12,0	1,14	29,0	2,30	58,5
VC22ME14-06	3/8"	10,0	06	M22x1,5	0,28	7,0	0,87	22	0,55	14,0	1,22	31,0	2,38	60,5
VC24ME16-06	3/8"	10,0	06	M24x1,5	0,28	7,0	0,95	24	0,63	16,0	1,22	31,0	2,38	60,5
VC24ME16-08	1/2"	12,0	08	M24x1,5	0,37	9,5	0,95	24	0,63	16,0	1,26	32,0	2,50	63,5
VC30ME20-10	5/8"	16,0	10	M30x2,0	0,47	12,0	1,18	30	0,79	20,0	1,34	34,0	2,70	68,5
VC30ME20-12	3/4"	19,0	12	M30x2,0	0,59	15,0	1,18	30	0,79	20,0	1,38	35,0	3,33	84,5
VC36ME25-12	3/4"	19,0	12	M36x2,0	0,59	15,0	1,42	36	0,99	25,0	1,50	38,0	3,44	87,5
VC36ME25-16	1"	25,0	16	M36x2,0	0,79	20,0	1,42	36	0,99	25,0	1,54	39,0	3,64	92,5
VC42ME30-16	1"	25,0	16	M42x2,0	0,79	20,0	1,81	46	1,18	30,0	1,65	42,0	3,76	95,5

DKOS
MSOF

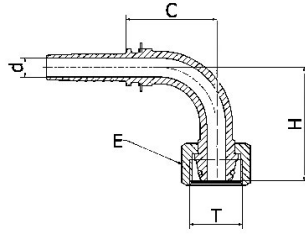
Metric female 24° flare heavy



Article Number	Hose ID		Size	Thread	d		E		Pipe		Cut-off C		Length	
	Inch	mm			Inch	mm	Inch	mm	Inch	mm	Inch	mm	Inch	mm
VC16MSOF08-04	1/4"	6,0	04	M16x1,5	0,16	4,0	0,75	19	0,32	8,0	0,99	25,0	1,97	50,0
VC18MSOF10-04	1/4"	6,0	04	M18x1,5	0,16	4,0	0,87	22	0,39	10,0	0,95	24,0	1,93	49,0
VC18MSOF10-05	5/16"	8,0	05	M18x1,5	0,22	5,5	0,87	22	0,39	10,0	0,95	24,0	2,03	51,5
VC20MSOF12-05	5/16"	8,0	05	M20x1,5	0,22	5,5	0,95	24	0,47	12,0	1,02	26,0	2,11	53,5
VC18MSOF10-06	3/8"	10,0	06	M18x1,5	0,28	7,0	0,87	22	0,39	10,0	0,95	24,0	2,11	53,5
VC20MSOF12-06	3/8"	10,0	06	M20x1,5	0,28	7,0	0,95	24	0,47	12,0	1,02	26,0	2,19	55,5
VC22MSOF14-06	3/8"	10,0	06	M22x1,5	0,28	7,0	1,06	27	0,55	14,0	1,14	29,0	2,30	58,5
VC24MSOF16-08	1/2"	12,0	08	M24x1,5	0,37	9,5	1,18	30	0,63	16,0	1,14	29,0	2,38	60,5
VC30MSOF20-10	5/8"	16,0	10	M30x2,0	0,47	12,0	1,42	36	0,79	20,0	1,30	33,0	2,66	67,5
VC30MSOF20-12	3/4"	19,0	12	M30x2,0	0,59	15,0	1,42	36	0,79	20,0	1,34	34,0	3,29	83,5
VC36MSOF25-12	3/4"	19,0	12	M36x2,0	0,59	15,0	1,81	46	0,99	25,0	1,58	40,0	3,52	89,5
VC36MSOF25-16	1"	25,0	16	M36x2,0	0,79	20,0	1,81	46	0,99	25,0	1,62	41,0	3,72	94,5
VC42MSOF30-16	1"	25,0	16	M42x2,0	0,79	20,0	1,97	50	1,18	30,0	1,69	43,0	3,80	96,5

DKOS 90° MSOF 90°

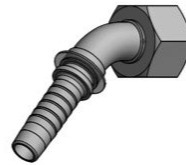
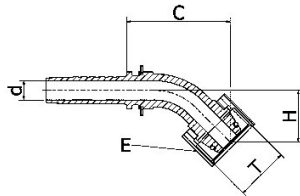
Metric female 24° flare heavy
90° elbow



Article Number	Hose ID		Size	Thread		d		E		Pipe		Cut-off C		Drop H		Length	
	Inch	mm		T	Inch	mm	Inch	mm	Inch	mm	Inch	mm	Inch	mm	Inch	mm	
VC16MSOF08-90S04	1/4"	6,0	04	M16x1,5	0,16	4,0	0,75	19	0,32	8,0	1,02	26,0	1,10	28,0	2,01	51,0	
VC18MSOF10-90S04	1/4"	6,0	04	M18x1,5	0,16	4,0	0,87	22	0,39	10,0	1,06	27,0	1,18	30,0	2,05	52,0	
VC20MSOF12-90S05	5/16"	8,0	05	M20x1,5	0,22	5,5	0,95	24	0,47	12,0	1,22	31,0	1,38	35,0	2,30	58,5	
VC18MSOF10-90S06	3/8"	10,0	06	M18x1,5	0,28	7,0	0,87	22	0,39	10,0	1,34	34,0	1,34	34,0	2,50	63,5	
VC20MSOF12-90S06	3/8"	10,0	06	M20x1,5	0,28	7,0	0,95	24	0,47	12,0	1,34	34,0	1,34	34,0	2,50	63,5	
VC22MSOF14-90S06	3/8"	10,0	06	M22x1,5	0,28	7,0	1,06	27	0,55	14,0	1,30	33,0	1,30	33,0	2,46	62,5	
VC24MSOF16-90S08	1/2"	12,0	08	M24x1,5	0,37	9,5	1,18	30	0,63	16,0	1,77	45,0	1,85	47,0	3,01	76,5	
VC30MSOF20-90S10	5/8"	16,0	10	M30x2,0	0,47	12,0	1,42	36	0,79	20,0	1,81	46,0	1,97	50,0	3,17	80,5	
VC30MSOF20-90S12	3/4"	19,0	12	M30x2,0	0,59	15,0	1,42	36	0,79	20,0	2,29	58,0	2,17	55,0	4,23	107,5	
VC36MSOF25-90S12	3/4"	19,0	12	M36x2,0	0,59	15,0	1,81	46	0,99	25,0	2,21	56,0	2,32	59,0	4,15	105,5	
VC36MSOF25-90S16	1"	25,0	16	M36x2,0	0,79	20,0	1,81	46	0,99	25,0	2,84	72,0	2,60	66,0	4,94	125,5	
VC42MSOF30-90S16	1"	25,0	16	M42x2,0	0,79	20,0	1,97	50	1,18	30,0	2,84	72,0	2,60	66,0	4,94	125,5	

DKOS 45° MSOF 45°

Metric female 24° flare heavy
45° elbow



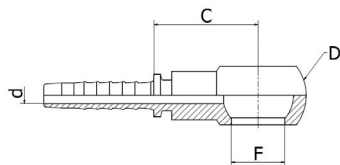
Article Number	Hose ID		Size	Thread		d		E		Pipe		Cut-off C		Drop H		Length	
	Inch	mm		T	Inch	mm	Inch	mm	Inch	mm	Inch	mm	Inch	mm	Inch	mm	
VC16MSOF08-45S04	1/4"	6,0	04	M16x1,5	0,16	4,0	0,75	19	0,32	8,0	1,42	36,0	0,59	15,0	2,40	61,0	
VC18MSOF10-45S04	1/4"	6,0	04	M18x1,5	0,16	4,0	0,87	22	0,39	10,0	1,58	40,0	0,63	16,0	2,56	65,0	
VC18MSOF10-45S05	5/16"	8,0	05	M18x1,5	0,22	5,5	0,87	22	0,39	10,0	1,69	43,0	0,75	19,0	2,78	70,5	
VC20MSOF12-45S05	5/16"	8,0	05	M20x1,5	0,22	5,5	0,95	24	0,47	12,0	1,65	42,0	0,75	19,0	2,74	69,5	
VC20MSOF12-45S06	3/8"	10,0	06	M20x1,5	0,28	7,0	0,95	24	0,47	12,0	1,54	39,0	0,71	18,0	2,70	68,5	
VC22MSOF14-45S06	3/8"	10,0	06	M22x1,5	0,28	7,0	1,06	27	0,55	14,0	1,73	44,0	0,75	19,0	2,89	73,5	
VC24MSOF16-45S08	1/2"	12,0	08	M24x1,5	0,37	9,5	1,18	30	0,63	16,0	1,93	49,0	0,79	20,0	3,17	80,5	
VC30MSOF20-45S10	5/8"	16,0	10	M30x2,0	0,47	12,0	1,42	36	0,79	20,0	2,48	63,0	1,06	27,0	3,84	97,5	
VC30MSOF20-45S12	3/4"	19,0	12	M30x2,0	0,59	15,0	1,42	36	0,79	20,0	2,88	73,0	1,18	30,0	4,82	122,5	
VC36MSOF25-45S12	3/4"	19,0	12	M36x2,0	0,59	15,0	1,81	46	0,99	25,0	2,84	72,0	1,26	32,0	4,78	121,5	
VC36MSOF25-45S16	1"	25,0	16	M36x2,0	0,79	20,0	1,81	46	0,99	25,0	3,43	87,0	1,58	40,0	5,53	140,5	
VC42MSOF30-45S16	1"	25,0	16	M42x2,0	0,79	20,0	1,97	50	1,18	30,0	3,31	84,0	1,38	35,0	5,41	137,5	

In bold print: On stock
Others: On request

Metric | RGN | Bolt, metric

RGN MRN

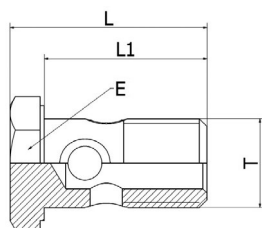
Metric banjo



Article Number	Hose ID		Size	Thread	d		E		Pipe	
	Inch	mm			Inch	mm	Inch	mm	Inch	mm
VC10MRN04	1/4"	6,0	04	M10	0,16	4,0	0,67	17,0	0,99	25,0
VC12MRN04	1/4"	6,0	04	M12	0,16	4,0	0,79	20,0	1,06	27,0
VC14MRN04	1/4"	6,0	04	M14	0,16	4,0	0,95	24,0	1,06	27,0
VC12MRN05	5/16"	8,0	05	M12	0,22	5,5	0,79	20,0	0,87	22,0
VC14MRN05	5/16"	8,0	05	M14	0,22	5,5	0,95	24,0	1,10	28,0
VC16MRN05	5/16"	8,0	05	M16	0,22	5,5	1,10	28,0	1,02	26,0
VC14MRN06	3/8"	10,0	06	M14	0,28	7,0	0,95	24,0	0,99	25,0
VC16MRN06	3/8"	10,0	06	M16	0,28	7,0	1,10	28,0	1,02	26,0
VC18MRN06	3/8"	10,0	06	M18	0,28	7,0	1,26	32,0	1,14	29,0
VC18MRN08	1/2"	12,0	08	M18	0,37	9,5	1,26	32,0	1,14	29,0
VC22MRN08	1/2"	12,0	08	M22	0,37	9,5	1,42	36,0	1,22	31,0
VC22MRN10	5/8"	16,0	10	M22	0,47	12,0	1,42	36,0	1,22	31,0
VC26MRN12	3/4"	19,0	12	M26	0,59	15,0	1,81	46,0	1,50	38,0
VC30MRN16	1"	25,0	16	M30	0,79	20,0	2,13	54,0	1,69	43,0

Bolt, metric MRM

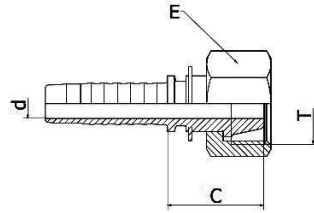
Metric bolt



Article Number	T	L		L1		E		Press. Max	
		Inch	mm	Inch	mm	Inch	mm	psi	bar
VC-RX10MRM	M10x1,0	0,95	24,0	0,77	19,5	0,55	14,0	4351	300
VC-RX12MRM	M12x1,5	1,24	31,5	1,00	25,5	0,67	17,0	4351	300
VC-RX14MRM	M14x1,5	1,34	34,0	1,12	28,5	0,75	19,0	4351	300
VC-RX16MRM	M16x1,5	1,62	41,0	1,30	33,0	0,87	22,0	4351	300
VC-RX18MRM	M18x1,5	1,75	44,5	1,44	36,5	0,95	24,0	3626	250
VC-RX22MRM	M22x1,5	1,83	46,5	1,36	34,5	1,06	27,0	2901	200
VC-RX26MRM	M26x1,5	2,21	56,0	1,79	45,5	1,26	32,0	2901	200

DKL MSF

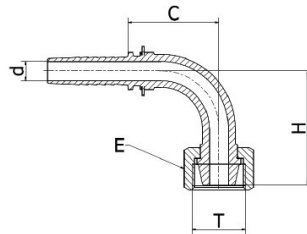
Metric female 24°/60° flare light



Article Number	Hose ID		Size	Thread		d		E		Pipe		Cut-off C		Length	
	Inch	mm		T	Inch	mm	Inch	mm	Inch	mm	Inch	mm	Inch	mm	
VC14MSF08-04	1/4"	6,0	04	M14x1,5	0,16	4,0	0,67	17	0,32	8,0	0,75	19,0	1,73	44,0	
VC16MSF10-04	1/4"	6,0	04	M16x1,5	0,16	4,0	0,75	19	0,39	10,0	0,75	19,0	1,73	44,0	
VC16MSF10-05	5/16"	8,0	05	M16x1,5	0,22	5,5	0,75	19	0,39	10,0	0,75	19,0	1,83	46,5	
VC18MSF12-05	5/16"	8,0	05	M18x1,5	0,22	5,5	0,87	22	0,47	12,0	0,83	21,0	1,91	48,5	
VC18MSF12-06	3/8"	10,0	06	M18x1,5	0,28	7,0	0,87	22	0,47	12,0	0,83	21,0	1,99	50,5	
VC22MSF15-06	3/8"	10,0	06	M22x1,5	0,28	7,0	1,06	27	0,59	15,0	0,87	22,0	2,03	51,5	
VC22MSF15-08	1/2"	12,0	08	M22x1,5	0,37	9,5	1,06	27	0,59	15,0	0,87	22,0	2,11	53,5	
VC26MSF18-10	5/8"	16,0	10	M26x1,5	0,47	12,0	1,26	32	0,71	18,0	0,95	24,0	2,30	58,5	

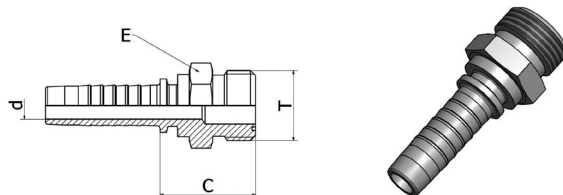
DKL 90° MSF 90°

Metric female 24°/60° flare light
90° elbow



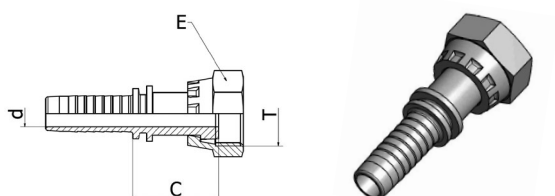
Article Number	Hose ID		Size	Thread		d		E		Pipe		Cut-off C		Drop H		Length	
	Inch	mm		T	Inch	mm	Inch	mm	Inch	mm	Inch	mm	Inch	mm	Inch	mm	
VC14MSF08-90S04	1/4"	6,0	04	M14x1,5	0,16	4,0	0,67	17	0,32	8,0	1,22	31,0	1,14	29,0	2,20	56,0	
VC16MSF10-90S05	5/16"	8,0	05	M16x1,5	0,22	5,5	0,75	19	0,39	10,0	1,26	32,0	1,26	32,0	2,34	59,5	
VC18MSF12-90S06	3/8"	10,0	06	M18x1,5	0,28	7,0	0,87	22	0,47	12,0	1,30	33,0	1,34	34,0	2,46	62,5	
VC22MSF15-90S08	1/2"	12,0	08	M22x1,5	0,37	9,5	1,06	27	0,59	15,0	1,69	43,0	1,38	35,0	2,93	74,5	
VC26MSF18-90S10	5/8"	16,0	10	M26x1,5	0,47	12,0	1,26	32	0,71	18,0	1,81	46,0	1,65	42,0	3,17	80,5	

**ORFS male
ORM**



Article Number	Hose ID		Size	Thread		d		E		Cut-off C		Length	
	Inch	mm		T	Inch	mm	Inch	mm	Inch	mm	Inch	mm	
VC04ORM04	1/4"	6,0	04	9/16-18	0,16	4,0	0,59	15	0,91	23,2	1,90	48,2	
VC06ORM06	3/8"	10,0	06	11/16-16	0,28	7,0	0,75	19	1,03	26,2	2,19	55,7	
VC08ORM08	1/2"	12,0	08	13/16-16	0,37	9,5	0,87	22	1,15	29,3	2,39	60,8	
VC10ORM10	5/8"	16,0	10	1-14	0,47	12,0	1,06	27	1,32	33,4	2,67	67,9	
VC12ORM12	3/4"	19,0	12	1.3/16-12	0,59	15,0	1,26	32	1,41	35,9	3,36	85,4	
VC16ORM16	1"	25,0	16	1.7/16-12	0,79	20,0	1,50	38	1,47	37,4	3,58	90,9	

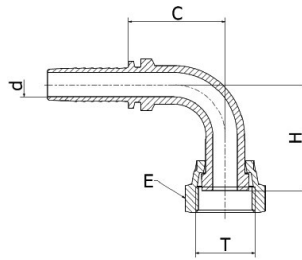
**ORFS female
LORF**



Article Number	Hose ID		Size	Thread		d		E		Cut-off C		Length	
	Inch	mm		T	Inch	mm	Inch	mm	Inch	mm	Inch	mm	
VC04LORF04	1/4"	6,0	04	9/16-18	0,16	4,0	0,67	17	0,95	24,0	1,93	49,0	
VC06LORF04	1/4"	6,0	04	11/16-16	0,16	4,0	0,87	22	0,95	24,0	1,93	49,0	
VC06LORF05	5/16"	8,0	05	11/16-16	0,22	5,5	0,87	22	0,95	24,0	2,03	51,5	
VC06LORF06	3/8"	10,0	06	11/16-16	0,28	7,0	0,87	22	0,95	24,0	2,11	53,5	
VC08LORF06	3/8"	10,0	06	13/16-16	0,28	7,0	0,95	24	1,18	30,0	2,34	59,5	
VC08LORF08	1/2"	12,0	08	13/16-16	0,37	9,5	0,95	24	1,18	30,0	2,42	61,5	
VC10LORF08	1/2"	12,0	08	1-14	0,37	9,5	1,18	30	1,30	33,0	2,54	64,5	
VC10LORF10	5/8"	16,0	10	1-14	0,47	12,0	1,18	30	1,30	33,0	2,66	67,5	
VC12LORF12	3/4"	19,0	12	1.3/16-12	0,59	15,0	1,42	36	1,34	34,0	3,29	83,5	
VC16LORF16	1"	25,0	16	1.7/16-12	0,79	20,0	1,62	41	1,46	37,0	3,56	90,5	

ORFS 90° female LORF 90°

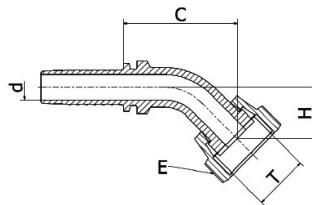
90° elbow



Article Number	Hose ID			Thread	d		E		Cut-off C		Drop H		Length	
	Inch	mm	Size	T	Inch	mm	Inch	mm	Inch	mm	Inch	mm	Inch	mm
VC04LORF90S04	1/4"	6,0	04	9/16-18	0,16	4,0	0,67	17	1,02	26,0	0,95	24,0	2,01	51,0
VC06LORF90S04	1/4"	6,0	04	11/16-16	0,16	4,0	0,87	22	1,02	26,0	1,02	26,0	2,01	51,0
VC06LORF90S06	3/8"	10,0	06	11/16-16	0,28	7,0	0,87	22	1,38	35,0	1,10	28,0	2,54	64,5
VC08LORF90S06	3/8"	10,0	06	13/16-16	0,28	7,0	0,95	24	1,34	34,0	1,22	31,0	2,50	63,5
VC08LORF90S08	1/2"	12,0	08	13/16-16	0,37	9,5	0,95	24	1,58	40,0	1,46	37,0	2,81	71,5
VC10LORF90S10	5/8"	16,0	10	1-14	0,47	12,0	1,18	30	1,77	45,0	1,65	42,0	3,13	79,5
VC12LORF90S12	3/4"	19,0	12	1.3/16-12	0,59	15,0	1,42	36	2,25	57,0	1,85	47,0	4,19	106,5
VC16LORF90S16	1"	25,0	16	1.7/16-12	0,79	20,0	1,62	41	2,84	72,0	2,29	58,0	4,94	125,5

ORFS 45° female LORF 45°

45° elbow



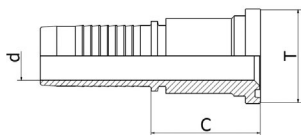
Article Number	Hose ID			Thread	d		E		Cut-off C		Drop H		Length	
	Inch	mm	Size	T	Inch	mm	Inch	mm	Inch	mm	Inch	mm	Inch	mm
VC04LORF45S04	1/4"	6,0	04	9/16-18	0,16	4,0	0,67	17	1,34	34,0	0,55	14,0	2,32	59,0
VC06LORF45S04	1/4"	6,0	04	11/16-16	0,16	4,0	0,87	22	1,42	36,0	0,55	14,0	2,40	61,0
VC06LORF45S06	3/8"	10,0	06	11/16-16	0,28	7,0	0,87	22	1,73	44,0	0,75	19,0	2,89	73,5
VC08LORF45S06	3/8"	10,0	06	13/16-16	0,28	7,0	0,95	24	1,65	42,0	0,67	17,0	2,81	71,5
VC08LORF45S08	1/2"	12,0	08	13/16-16	0,37	9,5	0,95	24	1,85	47,0	0,83	21,0	3,09	78,5
VC10LORF45S08	1/2"	12,0	08	1-14	0,37	9,5	1,18	30	1,69	43,0	0,91	23,0	2,93	74,5
VC10LORF45S10	5/8"	16,0	10	1-14	0,47	12,0	1,18	30	2,25	57,0	0,83	21,0	3,60	91,5
VC12LORF45S12	3/4"	19,0	12	1.3/16-12	0,59	15,0	1,42	36	2,56	65,0	1,02	26,0	4,51	114,5
VC16LORF45S16	1"	25,0	16	1.7/16-12	0,79	20,0	1,62	41	3,03	77,0	1,06	27,0	5,14	130,5

In bold print: On stock
Others: On request

Flanges | SFL 3000 PSI

SFL 3000 PSI SFH

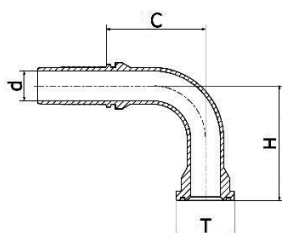
Flange SAE 3000



Article Number	Hose ID			T			d		Cut-off C		Length	
	Inch	mm	Size	Inch	mm	Size	Inch	mm	Inch	mm	Inch	mm
VC08SFH08	1/2"	12,0	08	1,19	30,2	1/2"	0,37	9,5	1,77	45,0	3,01	76,5
VC12SFH08	1/2"	12,0	08	1,50	38,1	3/4"	0,37	9,5	1,97	50,0	3,21	81,5
VC12SFH12	3/4"	19,0	12	1,50	38,1	3/4"	0,59	15,0	1,97	50,0	3,92	99,5
VC16SFH12	3/4"	19,0	12	1,75	44,5	1"	0,59	15,0	2,09	53,0	4,04	102,5
VC16SFH16	1"	25,0	16	1,75	44,5	1"	0,79	20,0	2,13	54,0	4,23	107,5
VC20SFH16	1"	25,0	16	2,00	50,8	1.1/4"	0,79	20,0	2,25	57,0	4,35	110,5

SFL 3000 PSI 90° SFH 90°

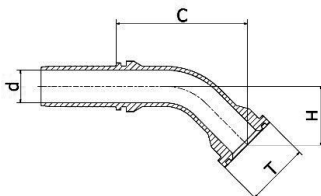
Flange SAE 3000
90° elbow



Article Number	Hose ID			T			d		Cut-off C		Drop H		Length	
	Inch	mm	Size	Inch	mm	Size	Inch	mm	Inch	mm	Inch	mm	Inch	mm
VC08SFH90S08	1/2"	12,0	08	1,19	30,2	1/2"	0,37	9,5	1,54	39,0	1,54	39,0	2,78	70,5
VC12SFH90S08	1/2"	12,0	08	1,50	38,1	3/4"	0,37	9,5	1,62	41,0	1,73	44,0	2,85	72,5
VC12SFH90S12	3/4"	19,0	12	1,50	38,1	3/4"	0,59	15,0	2,05	52,0	2,17	55,0	4,00	101,5
VC16SFH90S12	3/4"	19,0	12	1,75	44,5	1"	0,59	15,0	2,21	56,0	2,29	58,0	4,15	105,5
VC16SFH90S16	1"	25,0	16	1,75	44,5	1"	0,79	20,0	2,72	69,0	2,48	63,0	4,82	122,5
VC20SFH90S16	1"	25,0	16	2,00	50,8	1.1/4"	0,79	20,0	2,72	69,0	2,80	71,0	4,82	122,5

SFL 3000 PSI 45° SFH 45°

Flange SAE 3000
45° elbow



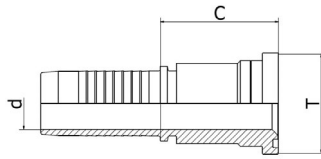
Article Number	Hose ID			T			d		Cut-off C		Drop H		Length	
	Inch	mm	Size	Inch	mm	Size	Inch	mm	Inch	mm	Inch	mm	Inch	mm
VC08SFH45S08	1/2"	12,0	08	1,19	30,2	1/2"	0,37	9,5	2,01	51,0	0,87	22,0	3,25	82,5
VC12SFH45S08	1/2"	12,0	08	1,50	38,1	3/4"	0,37	9,5	2,13	54,0	0,99	25,0	3,37	85,5
VC12SFH45S12	3/4"	19,0	12	1,50	38,1	3/4"	0,59	15,0	2,76	70,0	1,18	30,0	4,70	119,5
VC16SFH45S12	3/4"	19,0	12	1,75	44,5	1"	0,59	15,0	2,88	73,0	1,22	31,0	4,82	122,5
VC16SFH45S16	1"	25,0	16	1,75	44,5	1"	0,79	20,0	3,23	82,0	1,38	35,0	5,33	135,5
VC20SFH45S16	1"	25,0	16	2,00	50,8	1.1/4"	0,79	20,0	3,43	87,0	1,46	37,0	5,53	140,5

Flanges | SFL 6000 PSI

In bold print: On stock
Others: On request

SFL 6000 PSI SFH 6

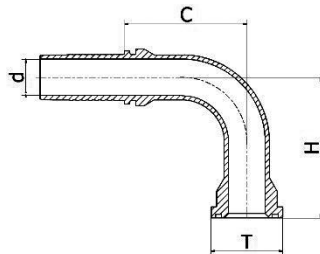
Flange SAE 6000



Article Number	Hose ID			T			d		Cut-off C		Length	
	Inch	mm	Size	Inch	mm	Size	Inch	mm	Inch	mm	Inch	mm
VC08SFH6-08	1/2"	12,0	08	1,25	31,7	1/2"	0,37	9,5	1,81	46,0	3,05	77,5
VC12SFH6-08	1/2"	12,0	08	1,63	41,3	3/4"	0,37	9,5	2,09	53,0	3,33	84,5
VC12SFH6-12	3/4"	19,0	12	1,63	41,3	3/4"	0,59	15,0	2,13	54,0	4,07	103,5
VC16SFH6-12	3/4"	19,0	12	1,88	47,6	1"	0,59	15,0	2,36	60,0	4,31	109,5
VC16SFH6-16	1"	25,0	16	1,88	47,6	1"	0,79	20,0	2,40	61,0	4,51	114,5
VC20SFH6-16	1"	25,0	16	2,13	54,0	1.1/4"	0,79	20,0	2,68	68,0	4,78	121,5

SFL 6000 PSI 90° SFH 6 – 90°

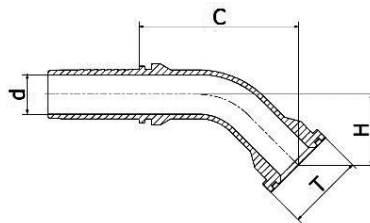
Flange SAE 6000
90° elbow



Article Number	Hose ID			T			d		Cut-off C		Drop H		Length	
	Inch	mm	Size	Inch	mm	Size	Inch	mm	Inch	mm	Inch	mm	Inch	mm
VC08SFH6-90S08	1/2"	12,0	08	1,25	31,7	1/2"	0,37	9,5	1,54	39,0	1,54	39,0	2,78	70,5
VC12SFH6-90S08	1/2"	12,0	08	1,63	41,3	3/4"	0,37	9,5	1,54	39,0	1,69	43,0	2,78	70,5
VC12SFH6-90S12	3/4"	19,0	12	1,63	41,3	3/4"	0,59	15,0	2,21	56,0	2,25	57,0	4,15	105,5
VC16SFH6-90S12	3/4"	19,0	12	1,88	47,6	1"	0,59	15,0	2,21	56,0	2,52	64,0	4,15	105,5
VC16SFH6-90S16	1"	25,0	16	1,88	47,6	1"	0,79	20,0	2,76	70,0	2,76	70,0	4,86	123,5
VC20SFH6-90S16	1"	25,0	16	2,13	54,0	1.1/4"	0,79	20,0	2,76	70,0	3,03	77,0	4,86	123,5

SFL 6000 PSI 45° SFH 6 – 45°

Flange SAE 6000
45° elbow



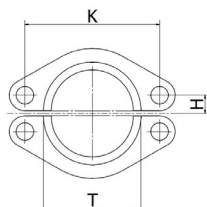
Article Number	Hose ID			T			d		Cut-off C		Drop H		Length	
	Inch	mm	Size	Inch	mm	Size	Inch	mm	Inch	mm	Inch	mm	Inch	mm
VC08SFH6-45S08	1/2"	12,0	08	1,25	31,7	1/2"	0,37	9,5	2,01	51,0	0,87	22,0	3,25	82,5
VC12SFH6-45S08	1/2"	12,0	08	1,63	41,3	3/4"	0,37	9,5	2,25	57,0	1,10	28,0	3,48	88,5
VC12SFH6-45S12	3/4"	19,0	12	1,63	41,3	3/4"	0,59	15,0	2,84	72,0	1,18	30,0	4,78	121,5
VC16SFH6-45S12	3/4"	19,0	12	1,88	47,6	1"	0,59	15,0	2,99	76,0	1,34	34,0	4,94	125,5
VC16SFH6-45S16	1"	25,0	16	1,88	47,6	1"	0,79	20,0	3,35	85,0	1,42	36,0	5,45	138,5
VC20SFH6-45S16	1"	25,0	16	2,13	54,0	1.1/4"	0,79	20,0	3,55	90,0	1,62	41,0	5,65	143,5

In bold print: On stock
Others: On request

Flanges | Standpipes

Cut Split Flange 3000 PSI

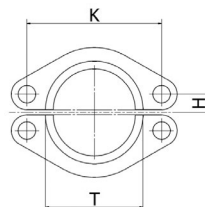
Cut Split Flange 3000 PSI



Article Number	T		Size	K		H	
	Inch	mm		Inch	mm	Inch	mm
VC-CSF08	1,19	30,2	1/2"	1,50	38,10	0,34	8,74
VC-CSF12	1,50	38,1	3/4"	1,88	47,63	0,44	11,13
VC-CSF16	1,75	44,5	1"	2,06	52,37	0,52	13,08
VC-CSF20	2,00	50,8	1.1/4"	2,31	58,72	0,59	15,09

Cut Split Flange 6000 PSI

Cut Split Flange 6000 PSI

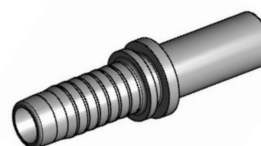
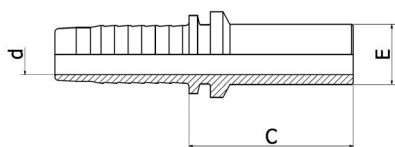


Article Number	T		Size	K		H	
	Inch	mm		Inch	mm	Inch	mm
VC-CSF6-08	1,25	31,7	1/2"	1,60	40,49	0,36	9,12
VC-CSF6-12	1,63	41,3	3/4"	2,00	50,80	0,47	11,91
VC-CSF6-16	1,88	47,6	1"	2,25	57,15	0,55	13,89
VC-CSF6-20	2,13	54,0	1.1/4"	2,63	66,68	0,63	15,88

Standpipes

BEL / BES MOSE

Metric Standpipe straight



Article Number	Hose ID		Size	d		Pipe E		Cut-off C		Type	Length	
	Inch	mm		Inch	mm	Inch	mm	Inch	mm		Inch	mm
VC06MOSE04	1/4"	6,0	04	0,16	4,0	0,24	6	1,26	32,0	L/S	2,24	57,0
VC08MOSE04	1/4"	6,0	04	0,16	4,0	0,32	8	1,14	29,0	L/S	2,13	54,0
VC10MOSE04	1/4"	6,0	04	0,16	4,0	0,39	10	1,26	32,0	L/S	2,24	57,0
VC12MOSE04	1/4"	6,0	04	0,16	4,0	0,47	12	1,18	30,0	L/S	2,17	55,0
VC08MOSE05	5/16"	8,0	05	0,22	5,5	0,32	8	1,14	29,0	L/S	2,22	56,5
VC10MOSE05	5/16"	8,0	05	0,22	5,5	0,39	10	1,18	30,0	L/S	2,26	57,5
VC12MOSE05	5/16"	8,0	05	0,22	5,5	0,47	12	1,26	32,0	L/S	2,34	59,5
VC10MOSE06	3/8"	10,0	06	0,28	7,0	0,39	10	1,22	31,0	L/S	2,38	60,5
VC12MOSE06	3/8"	10,0	06	0,28	7,0	0,47	12	1,22	31,0	L/S	2,38	60,5
VC14MOSE06	3/8"	10,0	06	0,28	7,0	0,55	14	1,42	36,0	S	2,58	65,5
VC15MOSE08	1/2"	12,0	08	0,37	9,5	0,59	15	1,30	33,0	L	2,54	64,5
VC16MOSE08	1/2"	12,0	08	0,37	9,5	0,63	16	1,50	38,0	S	2,74	69,5
VC18MOSE10	5/8"	16,0	10	0,47	12,0	0,71	18	1,34	34,0	L	2,70	68,5
VC22MOSE12	3/4"	19,0	12	0,59	15,0	0,87	22	1,42	36,0	L	3,37	85,5
VC25MOSE12	3/4"	19,0	12	0,59	15,0	0,99	25	1,93	49,0	S	3,88	98,5
VC25MOSE16	1"	25,0	16	0,79	20,0	0,99	25	1,93	49,0	S	4,04	102,5
VC28MOSE16	1"	25,0	16	0,79	20,0	1,10	28	1,54	39,0	L	3,64	92,5

VALCON QUALITY HYDRAULICS

ValCon® stands for high-quality hydraulic products in original equipment quality for a worldwide use. Precision, reliability and high-quality processing are special trademarks of ValCon®.

ValCon® products are developed and tested in collaboration with customers from the original equipment sector and international trade.

The result: An outstanding orientation on praxis.

A comprehensive quality assurance guarantees maximum reliability for ValCon® products.

ValCon® Quality Hydraulics – powerful, precise, guaranteed.



powerful · precise · guaranteed

Available at

Indunorm Hydraulik GmbH
Oderstraße 3
47506 Neukirchen-Vluyn
Germany
Tel.: +49 2845 2950-0
Fax: +49 2845 2950-280
E-Mail: info@indunorm.de
www.valcon-hydraulics.com


ValCon®
QUALITY HYDRAULICS